

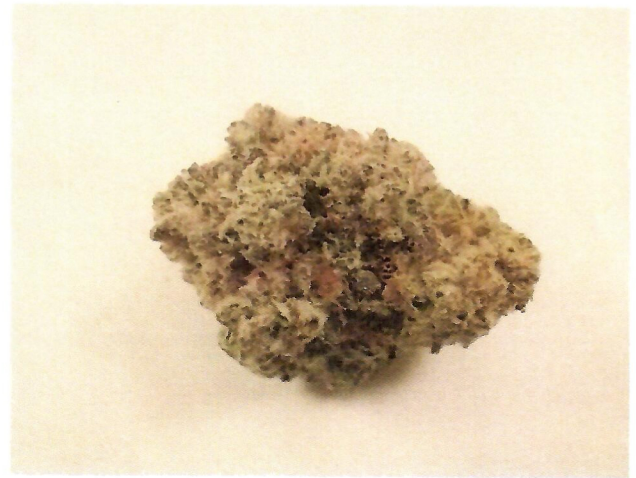
These test results are for Research and Development purposes only

Page 1 of 1

 Sample Mitten Cake

Strain

<b>0.24%</b>	<b>0.17%</b>	<b>27.08%</b>
$\Delta 9$ THC	Total CBD	Total Cannabinoids
<b>Not tested</b>	<b>Pass</b>	<b>270.8</b>
Water Activity	Moisture	mg / g Total Cannabinoids

 Sample ID **23112141050**


Harvest/Prod Date

Report Created

11/30/2023

Results Valid Until

11/30/2024

Sample Extracted

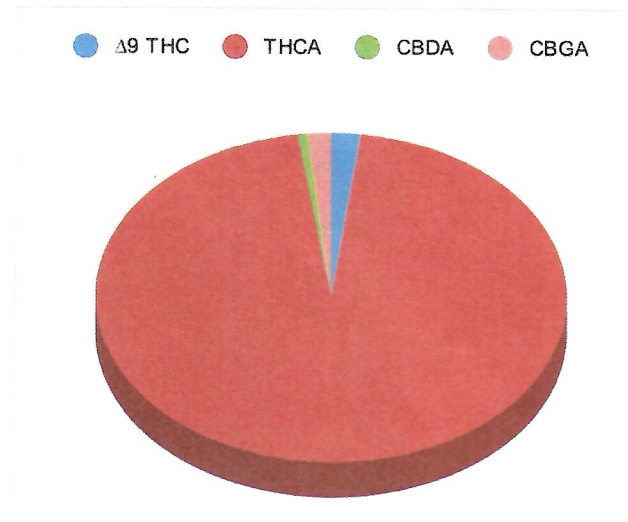
11/29/2023 18:22:00

Sample Analyzed

11/30/2023 3:57


Method SOP LO001-R11

Cannabinoids	%Weight	mg/ gram	LOQ(% /w)
$\Delta 9$ THC	0.24	2.4	0.06
THCA	25.91	259.1	0.06
Total THC ( $THCA \cdot 0.877$ ) + $\Delta 9$ THC	22.96	229.6	0.06
CBDA	0.19	1.9	0.06
CBD	<LOQ	<LOQ)	0.06
CBN	<LOQ	<LOQ)	0.06
$\Delta 8$ THC	<LOQ	<LOQ)	0.06
CBC	<LOQ	<LOQ)	0.06
CBGA	0.44	4.4	0.06
CBG	<LOQ	<LOQ)	0.06
CBDV	<LOQ	<LOQ)	0.06
CBDVA	<LOQ	<LOQ)	0.06
THCVA	<LOQ	<LOQ)	0.06
CBDQ	<LOQ	<LOQ)	0.06
HHC	<LOQ	<LOQ)	0.09



Total THC and Total CBD are calculated values per OAR 333-064-0100. Cannabinoid values for plant matter samples are reported on a dry weight basis. Water activity action level is 0.65Aw. LOQ= Limit of Quantitation. NR=Not Reported.

[Rogue Research Lab LLC](http://Rogue Research Lab LLC)
[Rogue River, OR 97537](http://Rogue River, OR 97537) Tel. 541-582-1962

[rogue-research-lab.com](http://rogue-research-lab.com)
  
 Craig Berry - Lab Director  
 11/30/23

Results pertain to submitted samples only. Rogue Research Lab LLC makes no claims as to the consumer safety or other risks associated with any detected or non-detected amounts of any pesticides, solvents or other adulterants. This report shall not be reproduced, unless in its entirety, without written approval from Rogue Research Lab LLC. Samples were received in good condition and all QC samples met acceptance criteria of the method; data available upon request. For informational purposes only.